

True Enterprise-Grade IT Management in an All-In-One Solution

KRATOS



Real-Time Intelligence, Fault Tolerance, Centralized Monitoring, and Cyber Security Readiness

There is zero tolerance for network and IT downtime in today's net-centric environments. Continuity of Operations Plans (COOP) demand high availability networks making enterprise grade IT and network management critical to maintaining availability and performance.

Real-time intelligence, fault-tolerance, centralized management, scalability, and cyber security are the measures of true enterprise IT management. While traditional tools exist that attempt a solution, they are either too simplistic or overly complex. These solutions either lack true enterprise functionality or are costly and time intensive, consisting of multiple tools and interfaces, requiring teams to implement and maintain as well as significant investments in training.

Only NeuralStar® helps ensure continuity of network operations with a solution that is easy to deploy, manage and provides real-time intelligence for situational awareness, all while accelerating ROI.

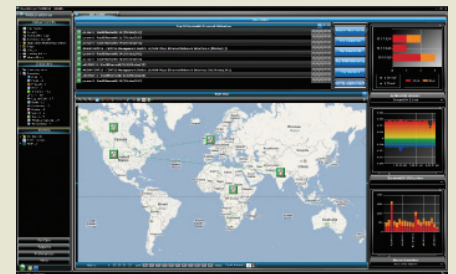
Central Control with Distributed Execution

NeuralStar is a two-tiered, centrally monitored, fully replicated enterprise IT management system that provides network continuity of operations out-of-the-box.

- Delivers a global consolidated view of the entire network.
- Provides visibility into remote deployments for a single view of geographically distributed networks.
- Ensures automatic failover and redundancy for continuous operation.
- Provides real-time intelligence by analyzing events in memory or in a database.
- Monitors the health of the network by aggregating fault, availability and management data from multiple components.
- Tracks application performance and availability across multiple installations in distributed environments.
- Offers a more efficient and economical alternative to Manager of Managers (MOM) and Element Management Systems (EMS).

True Enterprise IT Management

- Real-time intelligence for situational awareness
- Increased fault tolerance and ROI
- Robust cyber security readiness
- Improved performance through load balancing
- Strong disaster recovery capabilities
- Powerful network management and centralized monitoring



▲ NeuralStar delivers real-time intelligence, fault-tolerance, centralized management, scalability, and cyber security awareness for true enterprise-grade IT and network management.

Real-Time Intelligence For Situational Awareness

NeuralStar delivers industry leading real-time intelligence that enhances IT situational awareness. NeuralStar enables IT managers to perform near instantaneous analysis by processing streaming events of large data volumes, in memory seeking out meaningful patterns to proactively identify and prevent issues before they impact users.

- Monitor applications, networks, security operations and servers to deliver a single view to assure the health, availability, and performance of IT operations.
- Accelerate root-cause and impact analysis and dramatically lower the Mean-Time-To-Resolution (MTTR) by creating powerful rules for monitoring availability and performance with a simple wizard driven interface.
- Isolate issues and respond quickly to outages by getting real-time alerts when a change has occurred on the network.
- Generate quicker and deeper analysis of IT events with streaming and forensic event processing for enhanced situational awareness.

Powerful Enterprise Network Management And Centralized Monitoring

NeuralStar provides enterprises with the ability to view and manage heterogeneous networks in real-time from a single console.

- Track all network-connected devices such as hardware, applications, and security systems.
- Utilize Unified Monitoring Centers to track application performance and availability across multiple installations in distributed environments.
- Manage LANs, MANs and WANs seamlessly.
- Manage all network technologies—data, voice, video, wireless, satellite and more in a single solution.
- Integrate seamlessly with other security and NMS systems.
- Scale to meet growing networks with the flexibility to adjust to changes.



▲ NeuralStar integrates all network event data—availability, performance, security, and more from any network connected port, device, service or application - all on a single console.

Robust Cyber Security Readiness

NeuralStar provides the complete view of the network and accelerates the ability to respond proactively to threats.

- Provides a real-time view of security events across multiple devices and networks.
- Integrates with proven technologies (IDS, IPS, firewalls and anti-virus detection) addressing the evolving spectrum of security threats.
- Enables rapid response to problems and avoids serious threats.

Fault Tolerance And Increased ROI

NeuralStar delivers the highest level of redundancy out-of-the-box to reduce costly downtime. In the event of a network outage, local collectors continue to gather data until a network connection is re-established and replication continues.

- Minimizes costly network outages.
- Automates recovery without human intervention and synchronizes all data.
- Improves system performance and reduces hardware costs through load balancing.
- Provides disaster recovery capabilities.
- Installs quickly without extensive services engagements.
- Eliminates the cost to implement and support multiple tools and interfaces.
- Reduces training, maintenance and management costs.

Enterprise Grade IT Management

NeuralStar serves as the enterprise grade IT monitoring component at the heart of some of the world's most sophisticated and secure environments. The solution has been deployed across the government and commercial sectors by customers as diverse as the Defense Information Systems Agency (DISA), Missile Defense Agency (MDA) and Microsoft.